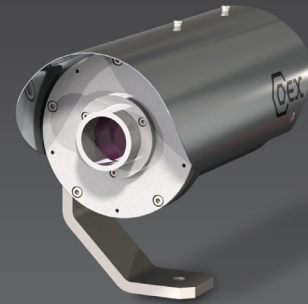


COEX™ C3000 Thermal IP Fixed Camera Station

The COEX™ C3000 Thermal IP Fixed Camera Station has a unique compact and lightweight design developed specifically for hazardous-area applications. C3000 camera stations are designed for both toughness and durability as demanded for operation in the most adverse of environments, while allowing constant visual feedback in zero-light conditions.



COEX C3000 hazardous-area camera stations operate in the most extreme environments worldwide. Designed for toughness, durability, and certified to perform in ambient temperatures from -55°C to +70°C without compromise, they are ideal for oil and gas, marine, and industrial installations.

This premium-performance camera station delivers superb thermal imaging in all lighting conditions and across long distances.

Featuring the latest encoding technology (2nd generation IP encoder), the camera station is capable of triple-stream H.264 and H.265 encoding for simultaneous live view and recording.

Utilizing the advanced radiometry feature, the camera station can provide real-time temperature data and differential temperature monitoring of critical devices and applications.

The C3000 Thermal IP Fixed Camera Station has cybersecurity measures built-in, including encrypted video streaming, HTTPS, and 802.1x protocols.

This camera station is compatible with a variety of VMS platforms through ONVIF Profile S and T compliance.

Options

- Advanced radiometry

Specifications

CERTIFICATIONS / RATINGS ⁶		[OPTIONS]
ATEX / IECEx / UKCA	ATEX II 2GD, Ex db IIB/IIC Gb; Ex tb IIIC Db; T4 / T5 / T6 EN60079-0, EN60079-1, EN60079-28, EN60079-31, IEC60079-0, IEC60079-1, IEC60079-28, IEC60079-31	
ATEX / IECEx / UKCA Certified Temperature	-55°C to +50°C (T6), +60°C (T5), +70°C (T4)	
CSAus Class / Division	Class I, Div 1, Groups A, B, C, D; Class II, Div I, Groups E, F, G; T4 / T5 / T6	
CSAus Class / Zone	Class I, Zone 1, AEx db IIC Gb; Zone 21, AEx tb IIIC Db; T4 / T5 / T6	
CSAus Standards	FM3600, FM3615, FM3616, UL50, UL50E, UL62368-1 UL60079-0, UL60079-1, UL60079-31	
CSAus Certified Temperature	-55°C to +50°C (T6), +55/60°C (T5), +70°C (T4)	
CSA Class / Division	Ex db IIC Gb; Ex tb IIIC Db; Class II, Div 1, Groups E, F, G; Class III, Div 1; T4 / T5 / T6	
CSA Standards	C22.2 No. 0, C22.2 No. 60079-0, C22.2 No. 60079-1, C22.2 No. 60079-31, C22.2 No. 62368-1, IEC60529, C22.2 No. 94.1, C22.2 No. 94.2	
CSA Certified Temperature	-55°C to +50°C (T6), +60°C (T5), +70°C (T4)	
EMC	EN61000-6-2, EN 61000-6-4, Class A limits	
EMC (US & Can.)	FCC CFR47 Part 15 Class A	
CE / UKCA	IEC62368-1, IEC60825-1	
DNV	TAA00001M2	
INMETRO	BRA 21.GE0018X	
C-TICK	On Request	
ENVIRONMENTAL		
Operating Temperature	-45°C to +70°C / -49°F to +158°F	
Storage Temperature	-45°C to +80°C / -49°F to +176°F	
Ingress Protection	IP66 & IP68 (30m Submersion for 4 hrs) to IEC60529 Type 6 Enclosure	
Salt Mist	IEC60068-2-52 & IEC60945 Section 8.12	
Vibration	0.7 g to IEC60068-2-6 & IEC60945	
Wind Loading	Operational to 130 km/h, survival to 268 km/h	
MECHANICAL		
Material	Electro-polished 316L stainless steel	
Window	Germanium window with DLC (Diamond-Like Carbon) coating and impact guard	
Mounting Orientation	Upright or inverted	
Mounting Base	1 x Ø12.5 mm / 0.49" fixing hole	
Dimensions* ¹ (W x D x H)	179 x 310 x 235 mm / 7.05" x 12.21" x 9.25"	
Weight* ¹	8 kg / 17.6 lb	
Cable Gland Entries	1 x M20	
ELECTRICAL		
Input Power Options	24 V AC/DC (±10%) 50/60 Hz	
Power Consumption* ¹	8 VA Quiescent 12 VA Max	
Auxiliary Inputs* ²	1 x contact closure input (5 V pull up) [up to 4 available on request]	
Relay Outputs* ²	1 x volt free switched output (24 V 0.75 A max) [up to 2 available on request]	
Audio* ²	[Line Input]	

CAMERA OPERATION

Preset Memory	128 user programmable preset positions (digital zoom)
ONVIF Control Features	Digital zoom control, preset store/recall, alarm inputs, and relay outputs

THERMAL IMAGER	T315	T345	T625	T650
Image Sensor	Uncooled LWIR VOx microbolometer			
Pixel Pitch	17 μ m			
Thermal Sensitivity	<50 mK at f/1.0			
Spectral Response	7.5- 13.5 μ m			
Refresh Rate	7.5 Hz / 8.3 Hz [25 Hz / 30 Hz]			
Pixel Resolution	336 x 256		640 x 512	
Fixed Focal Length	9 mm f/1.25	25 mm f/1.1	25 mm f/1.1	50 mm f/1.2
Angle of View	35° x 27°	13° x 10°	25° x 20°	12.4° x 9.9°
Depth of Field	1.1 m	11 m	11 m	36 m
Hyperfocal Distance	2.1 m	21 m	21 m	71 m
Features	Continuous digital zoom, auto/manual gain mode (AGC), auto/manual FFC(NUC), selectable color palettes, polarity, second generation digital detail enhancement (DDE), image optimization, active contrast enhancement (ACE), information based histogram equalization (IBHEQ), smart scene optimization (SSO)			
Human Detection ^{*3/4}	~285 m	~930 m	~930 m	~1700 m

VIDEO ENCODING

Compression Standards	H.264 (MPEG4 part 10/AVC) high, main, base profiles H.265 (MPEG-H part 2/HEVC), MJPEG
Bitrate Mode	Constant Bitrate (CBR), Variable Bitrate (VBR)
Encoding Capability	Up to 3 independently configurable encoded video streams
Stream Bitrate ^{*5}	100 kb/s to 25 Mb/s
Image Resolution ^{*5}	Native (640 x 512, 336 x 256), D1 (720 x 576/480), VGA (640 x 480), QVGA (320 x 240)
Image Rate ^{*5}	Full, half, quarter, sixth
GOP Structure	I-frame only, 5 to 240 frames
Region of Interest (ROI)	Configurable per encoded video stream, ability to crop a selected area of the image source for encoding (variable resolution and aspect ratio)

AUDIO ENCODING

Compression Standards	ARM AACLC, ARM AACLC MPEG2, ARM AACHE, ARM AACHE V2
Sample Rate	48 kHz, 44.1 kHz, 32 kHz, 16 kHz
Stream Bitrate	12 to 384 kb/s (AACHE and AACHE V2 32 to 64 kb/s)

NETWORK DEVICE

Interface Options	Ethernet (100Base-T, 10-Base-T), Auto/full/half duplex, Auto/10/100, Configurable MTU Size
Protocols	TCP/IP, UDP, ICMP, DHCP, DNS, HTTP, HTTPS, NTP, RTSP/RTP/RTCP, TSRTSP, RTMP, RTMPS, SRT, IGMP, SNMP, SYNS, SSL, TLS, 802.1x (EAP)
Control Protocol	SYNS, ONVIF (Profile S, T compliant)
Video Stream Delivery	RTSP/RTP (Unicast: UDP/TCP, Multicast UDP), TSRTSP, RTMP, RTMPS, SRT
Network Discovery	SYNS, WS-Discovery (ONVIF)
Device Security	Multiple users and 7 access levels protecting access to the web interface, ONVIF and RTSP services, HTTPS support, HTTP disable, 802.1x (EAP), video streaming disabled until change of default password, unicast stream disable
Supported Internet Browsers	Chrome/Firefox/IE/Edge (No Active-X browser components required)
System Maintenance	Field upgradeable firmware, diagnostic logs Hardware system supervisor providing temperature management, cold-start, auto-shutdown and watchdog control

PART CODE STRUCTURE

C3 - A B C D - E - F G H J

(Example) C3 - 1 F T315 - E 5 E X

A - CAMERA HOUSING SIZE

1 Size 1 camera housing

B - FIXED/PTZ

F Fixed

C - DAY/NIGHT CAMERA

N/A

D - THERMAL IMAGING MODULE

T315 Medium resolution, 35° HFOV
 T345 Medium resolution, 13° HFOV
 T625 High resolution, 25° HFOV
 T650 High resolution, 12° HFOV

E - WIPER

N/A

J - SPECIAL

Standard build

X Special build

H - OUTPUT TRANSMISSION TYPE

E Ethernet Base-T

G - BASE/MOUNTING TYPE

Standard fixed mounting

5 Alternative fixed mounting

F - TECHNOLOGY SERIES

E 2nd Gen, IP encoder

Synectics
 sales@synecticsglobal.com
synecticsglobal.com

Specifications subject to change. E & OE.
 Copyright © Synectic Systems Group Limited 2021. All Rights Reserved.

MANUFACTURER OF

 CAMERA STATIONS

Reference Number:
 06DS 0533 Iss 3