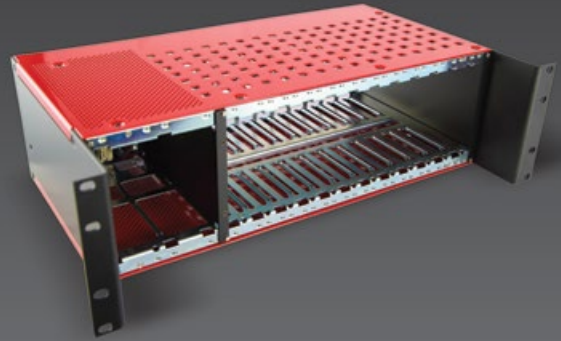


SYN-350B Fiber Optic Card Cage

The Synectics™ SYN-350B maximizes capacity and works seamlessly with a vast array of flexible fiber optic solutions. Designed to mount in standard 19" instrument racks for ease of integration with redundant power supply.



The SYN-350B is a 19" 3RU high rack mounting chassis which accepts two power supply modules (SYN921) to allow redundant power plus from 1 to 12 SYN standard card format plug-in modules.

The plug-in power supplies (SYN921) are capable of providing power for any combination of plug-in cards.

Features

- 19" rack mountable
- 3U high compact design
- Capable of holding up to 12 fiber optic cards
- Redundant plug-in power supply (SYN921) included
- Universal 110 - 240Vac power input
- Capable of powering any combination of cards

Options

- Available without redundant power (See SYN370B Card Cage)

Specifications

MECHANICAL

Material	Aluminium (Chassis)
Mounting	19" 3RU High
Card Capacity	12 x SYN Cards, 2 x SYN921 PSU Card
Dimensions (W x D x H)	482.6 x 265.7 x 132.6 mm

ELECTRICAL

Pin 1	NMS Address Line 0	Pins 6, 7	Ground
Pin 2	NMS Address Line 1	Pins 3	+12V Nominal
Pin 4	NMS Address Line 2	Pins 5	NMS Data +
Pin 8	NMS Address Line 3	Pins 9	NMS Data -

Synectics

sales@synecticsglobal.com

synecticsglobal.com

Specifications subject to change. E & OE.

Copyright © Synectic Systems Group Limited, Synectic Systems, Inc., Synectic Systems (Asia) Pte. Limited 2018. All Rights Reserved.

MANUFACTURER OF



CAMERA STATIONS

Literature Reference:
SYN350B/0418/A4 Iss 6